



North Central London
Clinical Commissioning Group



Your choices for maternity care in North Central London (NCL)



Introduction – improving your choice

The NHS in North Central London is looking at ways of improving choice and a more personalised pregnancy for women and aims to:

- help you have a maternity journey that is personal to you
- give you information on the range of options available and
- help you make choices that are right for you



What do women want in North Central London?

Women and their partners told us that:

- They wanted practical information about what to expect and facilities at the site of their place of birth choice
- They wanted the same midwife all the way through their pregnancy, friendly and helpful staff and good reviews of the services
- They wanted to be able to contact someone when they need to for advice and guidance
- There is a lack of information and support on choices available to them, e.g. homebirth and birth centres, breastfeeding, mental health and local classes for women and their partners

You can choose the provider that you want for your birth, but you should be aware that some are busier than others are and they will prioritise the women who live closest to them.

Most women can choose where they receive antenatal care, although some women with particular medical needs may be advised to attend hospital for appointments.

Wherever you choose to give birth in North Central London, you will have access to the right expertise from our highly skilled and experienced staff. We want to ensure you receive the best quality, safe care during your birth. It is your choice whether to accept or decline any test, vaccine, treatment or appointment that you are offered.

How will the information in the booklet help you?

This booklet will help you decide where you would like to give birth to your baby. One or more options may be advised to you but you may wish to choose a different option.

Remember, it is your pregnancy and your choice.

If at any time you are not happy during any aspect of your care in maternity, you are free to seek a second opinion.

You can think about the questions you would like to ask your GP or midwife about pregnancy and what is important to you about your birth.

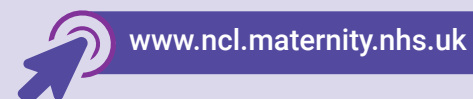
You can choose options that are available to you and record these decisions through your pregnancy and birth.



North Central London (NCL) website

We have created a website for women who are having their first baby and for women who have had a baby before.

There is also information on this website from trusted sources that provide information on your choices for maternity care and birth, together with information on local contacts and support organisations to assist you through your pregnancy.



My maternity journey,

a handy guide showing what to expect and when

1st trimester 0-12 weeks

As soon as you know you are pregnant, see your GP or self-refer as per details provided for each provider (www.myhealth.london.nhs.uk) to the provider of your choice. You should receive your booking appointment before ten weeks.

Consider where you want to have your baby:

- Midwife-led unit
- Home
- Hospital

Ask your midwife for a maternity exemption certificate to benefit from freeprescriptions and NHS dental treatment.

You will be offered:

Routine blood tests, ultrasound scan also known as the dating scan (around 12 weeks).

There are foods you should avoid when you are pregnant, visit www.nhs.uk for the latest guidance.

Always check with your GP, pharmacist or midwife before you take any medicine.

Visit www.Start4life for tips on keeping yourself well during pregnancy.

Key

General

Scans, screening and tests for your baby

Looking after yourself.

2nd trimester 13-28 weeks

Ask your midwife for a MAT B1 certificate (after 20 weeks). This confirms your pregnancy for your employer.

Book your antenatal classes – your midwife will give you details.

If you are out of work or on a low-income visit www.gov.uk to see what benefits you are entitled to.

You will be offered:

Routine blood tests, ultrasound scan (around 20 weeks) to check your baby's growth.

You will also have the option to find out the gender of your baby should you wish to.

You will be offered:

- Whooping cough vaccination
- Seasonal flu vaccination
- Oral glucose tolerance test for women at risk of gestational diabetes
- Screening for HIV, syphilis and hepatitis B



3rd trimester 28 weeks to birth

Prepare your hospital bag.

Prepare your birth plan – you will get the information you need from your antenatal classes or midwife.

Check out what you will need for feeding your baby and prepare yourself now.

You will be offered screening tests for our baby and routine blood tests for you and you may be offered a scan

Looking after yourself – visit www.nhs.uk to get advice on common health problems during pregnancy.

After the baby is born

Shortly after your baby is born you will be given a personal child health record (PCHB), also known as the red book. This may be in an electronic format that is currently being rolled out across areas of England.

Your baby will be offered:

Vitamin K and a physical examination at birth, and a more detailed examination within 72 hours.

BCG vaccination.

You will be seen at home by your midwife after which, a health visitor will visit you at home to help you, your family and your new baby stay healthy.

Postnatal care

Register the birth of your baby within 42 days – visit www.gov.uk for details.

Your baby will be offered:

A heel prick test which tests your baby's blood for nine rare, but serious health conditions.

A hearing screening will also be carried out if you had your baby at home. If you had your baby in a birth centre or hospital, this will be arranged for you after the birth.

If you were due for a cervical screening test while pregnant, this should be rescheduled for at least 12 weeks after the birth.

Your Rights

Please visit www.gov.uk/working-when-pregnant-yourrights for more information on your rights including maternity leave.



For more information visit www.nhs.uk

Your urine and blood pressure will be checked at each antenatal appointment.

Maternity providers in North Central London



	Provider	Address	Telephone	Website
1	Barnet Hospital	Wellhouse Lane, Barnet EN5 3DJ	Switchboard 020 8216 4600 Bookings 020 8375 1254	www.royalfree.nhs.uk/barnet-hospital/
2	Edgware Birth Centre	1068 Burnt Oak Broadway, Burnt Oak, Edgware, Middlesex HA8 0AD	Telephone 020 3758 2434 Monday to Friday 9am-5pm	www.royalfree.nhs.uk/services/services-a-z/maternity-services/our-birth-centres/edgware-birth-centre/
3	Royal Free London Hospital	Pond Street, London NW3 2QG	Switchboard 020 7794 0500 Antenatal appointments Ext 36169 Labour Ward Ext 33850/33849 Labour ward direct line 020 7830 2721	www.royalfree.nhs.uk/
4	North Middlesex	Sterling Way, London N18 1QX	Switchboard 020 8887 2000	www.northmid.nhs.uk
5	University College Hospital London (UCLH)	Elizabeth Garrett Anderson Wing, 25 Grafton Way, London WC1E 6DB	Telephone 020 3447 9400 select option 1	www.uclh.nhs.uk/OurServices/OurHospitals/UCH/EGAWing/Pages/Home.aspx
6	Whittington Health	Magdala Avenue, London N19 5NF	020 7272 3070	www.whittington.nhs.uk/

Maternity service providers

Royal Free Hospital

Royal Free London NHS Foundation Trust provides supportive, personalised and high-quality maternity care to more than 10,000 women living in and around Barnet, Camden, Enfield, Haringey, Hertfordshire, Islington and Middlesex.

Maternity care is offered from several hospitals and community hubs. The two main maternity hospitals are Barnet Hospital and the Royal Free Hospital. Maternity services are also offered at Chase Farm Hospital, Edgware Community Hospital, Cheshunt Community Hospital, Finchley Memorial Hospital and a range of health centres, GP practices, children’s centres and other community locations.

Specialist Services

- ✓ Local neonatal unit
- ✓ Specialist diabetes service
- ✓ Smoking cessation service
- ✓ Fetal medicine services
- ✓ Perinatal mental health service
- ✓ High risk antenatal service
- ✓ Consultant midwife birth choices clinic
- ✓ Homebirth service
- ✓ Private patient care (Royal Free Hospital only)
- ✓ Tongue-tie service (Royal Free Hospital only)
- ✓ FGM clinic (Barnet Hospital only)
- ✓ Socially complex caseload team (Barnet Hospital only)



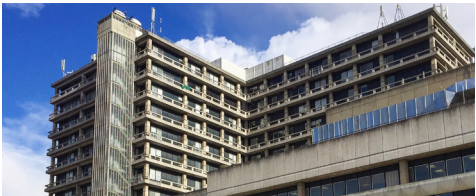
Royal Free Hospital
Pond Street
London
NW3 2QG

Switchboard: 020 7794 0500
Antenatal appointments: Ext 36169
Labour Ward: Ext 33850/33849
Labour Ward direct line: 020 7830 2721

Barnet Hospital
Wellhouse Lane
Barnet
EN5 3DJ

Switchboard: 0845 111 4000
Bookings: 020 8375 1254

How to find Royal Free Hospital



Parking and disabled parking

Parking at the Royal Free Hospital is charged at £3 per hour (max £24, ticket expires at midnight), 24 hours a day, 7 days a week. You can choose to pay at any time during your visit to the hospital, up to midnight of the same day. Visitors can pay for their parking by cash, card, and phone or by downloading the app. The payment line number is 033 0400 7275 and the site code is 79499. For your convenience payment points at the Royal Free Hospital are located at the main entrance (Pond Street), Rowland Hill Street entrance, upper south car park and the out of hours entrance (next to the security office, Pond Street). There is also a set-down parking zone (immediately outside the main entrance). It is free, but there is a strict no waiting policy in force and you must leave the area within five minutes of arrival.

Walking

From Belsize Park 4 minute walk and from Hampstead Heath station it is 5 minute walk.

Underground / overground station

The nearest station to the Royal Free Hospital is Belsize Park station, on the Northern Line. Hampstead Heath station is very near to the hospital and is on the London Overground network. The station accepts Oyster cards.

Bus

Bus	Route	Nearest Stop
24	Pimlico (Grosvenor Road) - Hampstead Heath	Nearest stops are Hampstead Heath Station, Belsize Park and Pond Street
46	Lancaster Gate Station - St Bartholomew's Hospital	
168	Royal Free Hospital - Dunton Road, Old Kent Road	
268	Golders Green Station - O2 centre/Sainsbury's (Finchley Road)	
C11	Archway Station - Brent Cross Shopping Centre	

Night Buses: Bus 24 runs 24 hours

Maternity service providers

Barnet Hospital

Royal Free London NHS Foundation Trust provides supportive, personalised and high-quality maternity care to more than 10,000 women living in and around Barnet, Camden, Enfield, Haringey, Hertfordshire, Islington and Middlesex.

Maternity care is offered from several hospitals and community hubs. The two main maternity hospitals are Barnet Hospital and the Royal Free Hospital. Maternity services are also offered at Chase Farm Hospital, Edgware Community Hospital, Cheshunt Community Hospital, Finchley Memorial Hospital and a range of health centres, GP practices, children’s centres and other community locations.

Specialist Services

- ✓ Local neonatal unit
- ✓ Specialist diabetes service
- ✓ Smoking cessation service
- ✓ Fetal medicine services
- ✓ Perinatal mental health service
- ✓ High risk antenatal service
- ✓ Consultant midwife birth choices clinic
- ✓ Homebirth service
- ✓ Private patient care (Royal Free Hospital only)
- ✓ Tongue-tie service (Royal Free Hospital only)
- ✓ FGM clinic (Barnet Hospital only)
- ✓ Socially complex caseload team (Barnet Hospital only)



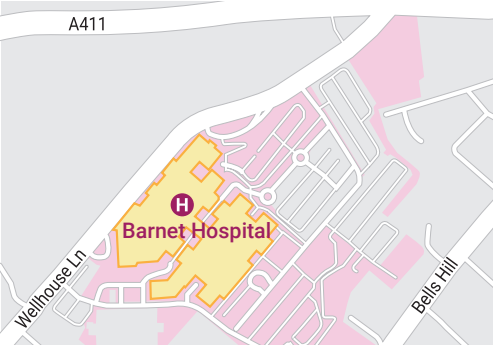
Barnet Hospital
Wellhouse Lane
Barnet
EN5 3DJ

Switchboard: 0845 111 4000
Bookings: 020 8375 1254

Royal Free Hospital
Pond Street
London
NW3 2QG

Switchboard: 020 7794 0500
Antenatal appointments: Ext 36169
Labour Ward: Ext 33850/33849
Labour Ward direct line: 020 7830 2721

How to find Barnet Hospital



Underground / overground station

The nearest tube station to Barnet Hospital is High Barnet Tube Station. From there, it is a 30-minute walk to the hospital, or a 10-minute bus ride, using routes 263, 107 or 307 from the tube station.

The nearest train station to Barnet Hospital is New Barnet, on the First Capital Connect line from Moorgate to Welwyn Garden City. It is a 10-minute bus ride from New Barnet station, using bus routes 107 or 307 to the hospital.

Bus

Bus	Route	Nearest Stop
263	Highbury Barn to Barnet Hospital	Barnet Hospital
384	Quinta Drive to Cockfosters	Barnet Hospital
107	Edgware Bus Station to New Barnet Station	Wood Street
307	Brimmsdown Station to Barnet Hospital	Wood Street
Night Buses: Buses 263 and 307 run 24 hours		

Parking and disabled parking

Barnet Hospital has an automatic number plate recognition system. All motorists are required to enter their full, correct vehicle registration number into the payment machine when purchasing their parking time. Parking time can be purchased upon arrival, when departing the hospital premises or after leaving the hospital using the PaybyPhone service. Payment after leaving the hospital can be made until midnight on the day of departure. Additionally, if you exceed the amount of time purchased you can pay for additional parking time until midnight on the day of departure. You can purchase your parking time from any machine by cash or card, or you can pay by phone with code 84254 on 033 0400 7275. You can also text REG and your number plate to 65565 or pay online at www.paybyphone.co.uk. Parking at Barnet Hospital is charged at the following rates: £2 for up to 1 hour; £3 for 1-3 hours; £4 for 3-4 hours; £7 for 4-6 hours; £10 for 6 hours to a maximum of 24 hours. There is a free, designated 20 minute drop off zone immediately outside the main entrance of Barnet Hospital.

Walking

30 minutes from High Barnet station.

Maternity service providers

Whittington Hospital

Whittington Health NHS Trust have a reputation for delivering excellent care and the hospital is renowned as one of the safest in England. They received a 'Good' overall rating from CQC in our inspection and were awarded 'Outstanding' for caring – of the 27 Trusts in London, only eight were given this coveted rating.

Maternity care at Whittington Health is tailored to your individual choices and needs. Depending on the pregnancy, you can choose to have your baby at home with the full support of our midwives, in their birth centre, or with additional support from our doctors and midwives on the labour ward at the Whittington hospital in Archway. The birth centre has four birthing pools and the labour ward has two pools and telemetry to encourage normality. The unit is undergoing upgrades to ensure a smart environment in which women can feel relaxed.

Specialist Services

- ✓ Local neonatal unit
- ✓ Maternal medicine service
- ✓ Fetal medicine service
- ✓ Specialist diabetic service
- ✓ Smoking cessation service
- ✓ Perinatal mental health service (antenatal and postnatal)
- ✓ Complex social team
- ✓ High risk antenatal service
- ✓ Homebirth service



Contact

Whittington Hospital
Magdala Avenue
London
N19 5NF

Telephone: 020 7272 3070
GP Phonenumber: 07584 115846
- Our dedicated antenatal telephone number for GPs is for any questions or concerns you have with your patients.
The phone is answered by the midwifery team Monday to Friday, 9am to 5pm.



Whittington Hospital



Underground / overground station

Nearest underground station is Archway station on the Northern line High Barnet line and nearest London Overground train station is Upper Holloway station.



Bus

Bus	Route	Nearest Stop
C11	Archway Station - Brent Cross Shopping Centre	Nearest stops are Archway station, Magdala Avenue, Highgate Hill and Holloway Road
W5	Archway Station - Harringay Sainsbury's	
4	Archway Station - Blackfriars Station	
17	Archway Station (Holloway Road) - London Bridge Bus Station	
41	Archway Station - Tottenham Hale Bus Station	
43	Halliwick Park - London Bridge Bus Station	
134	North Finchley Bus Station - UCLH (Euston Road)	
143	Archway Station - Brent Cross Shopping Centre	
210	Finsbury Park Station - Brent Cross Shopping Centre	
263	Highbury Barn - Barnet Hospital	
271	South Grove (Highgate) - Finsbury Square	
390	Archway Station - Victoria Bus Station	
Night Buses: Buses 43, 134, 271 and 390 runs 24 hours		



Parking and disabled parking

There is no parking at the hospital during the day but we do have a limited number of disabled (blue badge) parking spaces, which may be used by Blue Disabled Badge holders only between 8:00 am and 5:00 pm free of charge. Please note that normal charges will apply to Blue Disabled Badge holders after 5:00pm on weekdays and all day at weekends(see below). Parking is allowed between 5pm and 8am Mondays to Fridays and all day at the weekends. The first 20 minutes is free and after that is charged at £3.00 per hour. There is a limited amount of pay and display parking on the roads around the hospital.



Walking

5 minute walk to hospital from Archway station, 15 minute walk from Upper Holloway station.

Maternity service providers

University College Hospital

UCLH offers state-of-the-art facilities in a modern building with the latest fetal scanning equipment. Their midwife-led birthing centre includes two birthing pools and home-from-home amenities, whilst a spacious labour ward is staged by medical and midwifery teams at all times. The labour ward offers consultant led labour care and a pool room for women who are unable to use the birth centre.

UCLH also offers a midwife emergency telephone helpline – available 24 hours a day to answer your questions. A community midwifery service provides antenatal, home birth and postnatal care for women within the local region. UCLH has a specialist neonatal intensive care service providing care for sick and extremely premature babies – the only level 3 unit in north central London (level 3 units provide specialist care for the sickest and most premature babies).

Specialist Services

- ✓ Fetal medicine unit
- ✓ Maternal medicine services
- ✓ Neonatal Intensive Care Unit
- ✓ FGM clinic
- ✓ Smoking cessation service
- ✓ Private patient care
- ✓ Perinatal mental health service (antenatal only)
- ✓ Specialist diabetes service
- ✓ High risk antenatal services
- ✓ Consultant midwife birth choices clinic
- ✓ Tongue-tie service
- ✓ Homebirth service



University College Hospital
Elizabeth Garrett Anderson Wing
Antenatal Clinic
Integrated Antenatal Service
25 Grafton Way
London
WC1E 6DB

Telephone: 020 3447 9400
– select option 1
Email: uclh.antenatalreferrals@nhs.net

How to find University College Hospital



Underground / overground station

Nearest underground stations are Warren Street on the Northern and Victoria lines and Euston Square on the Hammersmith & City and Metropolitan lines, as well as Goodge Street which is also on the Northern line. Nearest overground train station is Euston station.

Bus

Bus	Route	Nearest Stop
14	Putney Heath/Green Man - Russell Square	Nearest stops are Euston Road and Tottenham Court Road
24	Grosvenor Road - Royal Free Hospital	
73	Holles Street/Oxford Circus - Stoke Newington Common	
134	North Finchley Bus Station - UCLH (Euston Road)	
390	Homerton Hospital (Wardle Street) - Tolpuddle Street/Islington Police Station	

Night Buses: Buses 14, 24,134 and 390 run 24 hours
N73 runs from Holles Street (Oxford Circus) to Walthamstow Bus Station



Parking and disabled parking

No car parking (other than patients with Blue Badges who are attending hospital outpatient appointments, day cases and the Emergency Department) is available at the UCH campus. For information on parking in the areas surrounding the Elizabeth Garrett Anderson Wing, please visit http://en.parkopedia.co.uk/parking/wc1e_6db/

Walking

5 minutes walk to Elizabeth Garrett Anderson wing (maternity services). 8 minutes walk from Euston train station and 8 minutes walk from Goodge Street station.

Maternity service providers

North Middlesex Hospital

Our vision: Our vision is to provide outstanding care for local people.

- Our objectives:**
- ✓ Excellent outcomes for patients
 - ✓ Excellent experience for patients and staff
 - ✓ Excellent value for money.

The above are underpinned by the associated objectives of each of our corporate and clinical divisions, their departments, teams and individual members of staff.

Maternity services at the North Middlesex

We know that having a baby is one of the most important and exciting things that will ever happen to you and your family and we want you to feel empowered and confident in your journey through pregnancy and childbirth with us. Our aim is to ensure you have the best possible pregnancy, birth and postnatal support along with a high standard of care.

We are committed to providing the best possible experience for everyone who gives birth with us, and our purpose-built facilities, state-of-the-art equipment and excellent staff are here for you every step of the way.

Specialist Services

- ✓ Local neonatal unit
- ✓ Specialist diabetes service
- ✓ Specialist HIV services
- ✓ Smoking cessation service
- ✓ Complex social team
- ✓ Perinatal mental health service
- ✓ High risk antenatal service

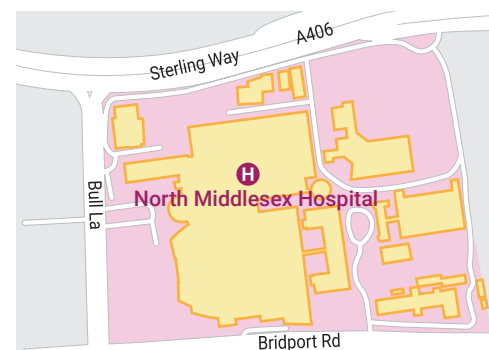


Contact

North Middlesex Hospital
Sterling Way
London
N18 1QX

Switchboard: 020 8887 2000

North Middlesex Hospital



Underground / overground station

Nearest train station is Silver Street on the London Liverpool Street to Cheshunt line. Nearest underground stations are Tottenham Hale on the Victoria line and Arnos Grove on the Piccadilly line then bus route to the hospital as not within walking distance.

Bus

Bus	Route	Nearest Stop
34	Barnet - Walthamstow Central station - Barnet	Nearest stops are J. K in Silver Street M. N and O in Victoria Road U and V Gloucester Road S and T Watermill Lane Q, X, Y and Z Bridport Road
102	Edmonton Green - Golders Green	
149	Ponders End to Waterloo Station	
144a	Edmonton Green - Muswell Hill	
259	Edmonton Green - Kings Cross Station	
279	Waltham Cross – Holloway	
318	NMUHT – Stamford Hill – NMUHT	
444	Turnpike Lane – Chingford Station	
491	North Middlesex University Hospital – Waltham Cross	
W6	Southgate – Palmers Green – Edmonton Green	

Night Buses: Buses 102, 149, and 444 runs 24 hours
N270 Waltham Cross – Victoria Station at the junction of Fore Street and Angel Road

Parking and disabled parking

The main car park's entrance is in Bull Lane. It is next to the hospital's main entrance and next to A&E. The main car park is for all hospital services. All parts of the hospital can be reached on foot from here. The maternity unit car park has only one entrance, in the westbound approach road of the A406 North Circular Road. The maternity unit car park is for the use of maternity unit service users only. A new number plate recognition system is in use to improve the management of parking at North Mid. The procedures have changed slightly. Please carefully read the signage around the car parks and ensure that you either pay for the full duration of your stay or register your vehicle. Anyone who is having difficulties with getting an issue resolved should contact nmcarpark@compass-group.co.uk.

Walking

10 minute walk from Silver Street station to the hospital.

Frequently asked questions

What is important to me during my pregnancy?

What is important to me for my baby's birth?

What is important to me after my baby is born?

Who will be my midwife and will I see the same one all the time?

Things to discuss with my midwife

Information links:

Pregnancy and baby guide

www.nhs.uk/conditions/pregnancyand-baby/pages/pregnancy-and-baby-care

Maternity rights (financial advice) and registering baby's birth

www.gov.uk

Which website – information on maternity providers

www.which.co.uk/birth-choice/where-to-give-birth

MyhealthLondon – maternity pages for London

www.myhealth.london.nhs.uk/maternity

Quick provider website links:

Barking Havering & Redbridge Hospitals (Queen's)

www.bhrhospitals.nhs.uk/maternity-services

Homerton University Hospital

www.homerton.nhs.uk/our-services/services-a-z/m/maternity-services/

Barts Health – Royal London, Newham and Whipps Cross Hospitals

www.bartshealth.nhs.uk/maternity

Neighbourhood Midwives

www.neighbourhoodmidwives.org.uk/nhs-care/

Glossary

Antenatal screening – tests that will be done whilst you are pregnant and before birth.

Birth/birthing centres, which include rooms with birthing pools, holistic care and is staffed by midwives 24 hours a day.

Delivery suites (these are sometimes referred to as labour wards) with specialist maternity services for giving birth and specialist theatres for women needing caesarean sections.

Epidural – Epidural anesthesia blocks pain in a particular region of the body. The goal of an epidural is to provide pain relief, rather than anesthesia, which leads to total lack of feeling. Epidurals block the nerve impulses from the lower spinal segments.

Friends and Family Test (FFT) – The Friends and Family Test (FFT) is a feedback tool that supports the principle that people who use NHS services should have the opportunity to provide feedback on their experience. It asks people if they would recommend the services they have used and offers a range of responses. The FFT provides a method to highlight both good and poor patient experience. This kind of feedback is vital in transforming NHS services and supporting patient choice.

Holistic care – means consideration of the complete person, physically, psychologically, socially, and spiritually, in the management and prevention of disease as there is a link between our physical health and our more general 'well-being'.

Increased consultant care for women who need more complex care and support.

Midwife-led care for women by a highly experienced team of midwives 24 hours a day, seven days a week.

Newborn screening – tests that will be done for your baby after birth.

NHS Choices – NHS Choices is an NHS website that provides information on services and for maternity, it provides patient information, advice and support for women and their families. It also includes reviews and ratings from members of the public and this is the data that we have used for the birth centres within this leaflet www.nhs.uk

Recovery areas or maternity HDU for women who have given birth in theatre or have very complex care needs.

Special Care Baby Units and intensive care units/neonatal units for babies requiring continuous medical and nursing care due to prematurity or complex needs.

Specialist midwife – A Clinical Midwife Specialist is a highly skilled and experienced registered midwife who has an extended level of independence and works closely with managers and senior clinicians.

Vitamin K injection for babies – In the UK, parents of new babies are routinely asked if their baby is to have supplementary vitamin K by injection or oral supplement, which is needed to make blood clot and prevent excessive internal bleeding, if required.



NCL Maternity Voices Partnerships (MVPs)

Maternity Voices Partnerships (MVPs) are NHS working groups made up of women and their families, midwives, doctors, health visitors and commissioners working together to review and contribute to the development of local maternity care.

The ethos of the MVPs are:

- Every woman on the maternity pathway has a chance to have her voice heard about the service she is receiving through an MVP
- Every MVP is adequately resourced to engage in true co-production of maternity services
- Local MVP chairs and service user members feel networked and supported in their role
- MVPs are involved in work in their local communities and also represented at Local Maternity System (LMS) level

In North Central London (NCL) we have four local MVPs that are each linked to the four Trusts in North Central London as below.

Your MVP wants to hear about your experiences of maternity care during, before and after your pregnancy.

If you would like to find out more, get in touch, join your local group and/or feedback on the services please see below for your local MVPs contact details.



North Middlesex University Hospital Maternity Voices Partnership (MVP)

👤 Fatima Kermanifar
✉ Northmiddlesexmvp@gmail.com
📘 [northmiddlesex_mvp](#)
🐦 [@northmiddmvp](#)

University College London Hospital (UCLH) Maternity Voices Partnership (MVP)

👤 Abuk Deng
✉ uclhmaternityvoices@gmail.com
📘 [UCLHMVP](#)
🐦 [@uclhmvp](#)

The Whittington Hospital (Whittington Health) Maternity Voices Partnership (MVP)

👤 Roz Webb
✉ Maternityvoices.whitthealth@nhs.net

Further details:
www.whittington.nhs.uk/default.asp?c=29220

Royal Free Hospitals London (Royal Free and Barnet Hospitals) Maternity Voices Partnership (MVP)

👤 Freya El Baz
✉ royalfreematernityvoices@gmail.com

Further details:
www.royalfree.nhs.uk/services/services-a-z/maternity-services/maternity-voices-at-the-royal-free-london/



North Central London
Clinical Commissioning Group

For any queries regarding maternity
services in North Central London please
e-mail: ncldcg.ncl.maternity@nhs.net

Publication date: September 2020
Review date: September 2021